



# Glass Divider

The Sneeze Guard Company

Project Name: \_\_\_\_\_

Location: \_\_\_\_\_

Item #: \_\_\_\_\_ Qty: \_\_\_\_\_

Date: \_\_\_\_\_

Model: **C140**

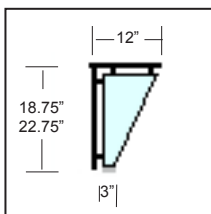
**Class:** Sneeze Guard - Full Service - ( vertical shield with top shelf )

Model C140 is part of the Crystalline Series featuring the elegant all glass look. The C140 Full Service (pass-over) Sneeze Guard is characterized by their vertical front shield and top shelf. They can accommodate straight or curved counters and are available in 1/4", 3/8", or 1/2" safety tempered glass. These sneeze guards have a maximum bay size of 84", eliminating the need for middle support posts to span most steam or prep tables. Multiple bay units have a continuous smooth front shield and top shelf. Removable mid shelves are optional and custom sizes available. Always review your sneeze guard plans with your health department.

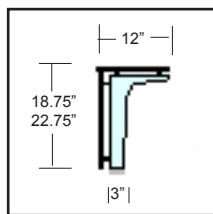
- Crystal Clear 1/2" Safety Tempered Glass Supports
- Two Standard Heights (18-3/4" and 22-3/4")
- Three Standard Top Shelf Depths (12", 18", and 22")
- Large Bay Size (Up to 84" between supports)
- Optional Removable Internal Shelves
- Five Standard Support Styles
- Chrome Finish Hardware



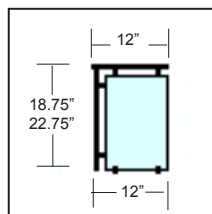
## Support Options:



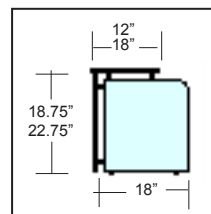
Open



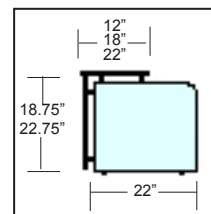
Sculpture



Closed  
12" Depth



Deep  
18" Depth



Extended  
22" Depth

## Options & Accessories

### Glass Options

- ☐ 1/4", 3/8", or 1/2" Glass
- ☐ Crystal Clear Glass
- ☐ Removable Mid-Shelf (11", 17", 21")
- ☐ Radius Corners
- ☐ Frosted Logo
- ☐ Frosted Glass

### Mounting Options

- ☐ Tab Feet
- ☐ U-Channel
- ☐ Flanged Boot

### Accessories

- ☐ LED Edge Lights
- ☐ LED Lights
- ☐ Logo Lights
- ☐ Food Warmer Power Drop
- ☐ Food Warmer Mount



The "Deep" or "Extended" supports are required as end supports on NSF certified sneeze guards. The "Open", "Closed", and "Sculpture" supports can be used for internal supports in multi-bay configurations

